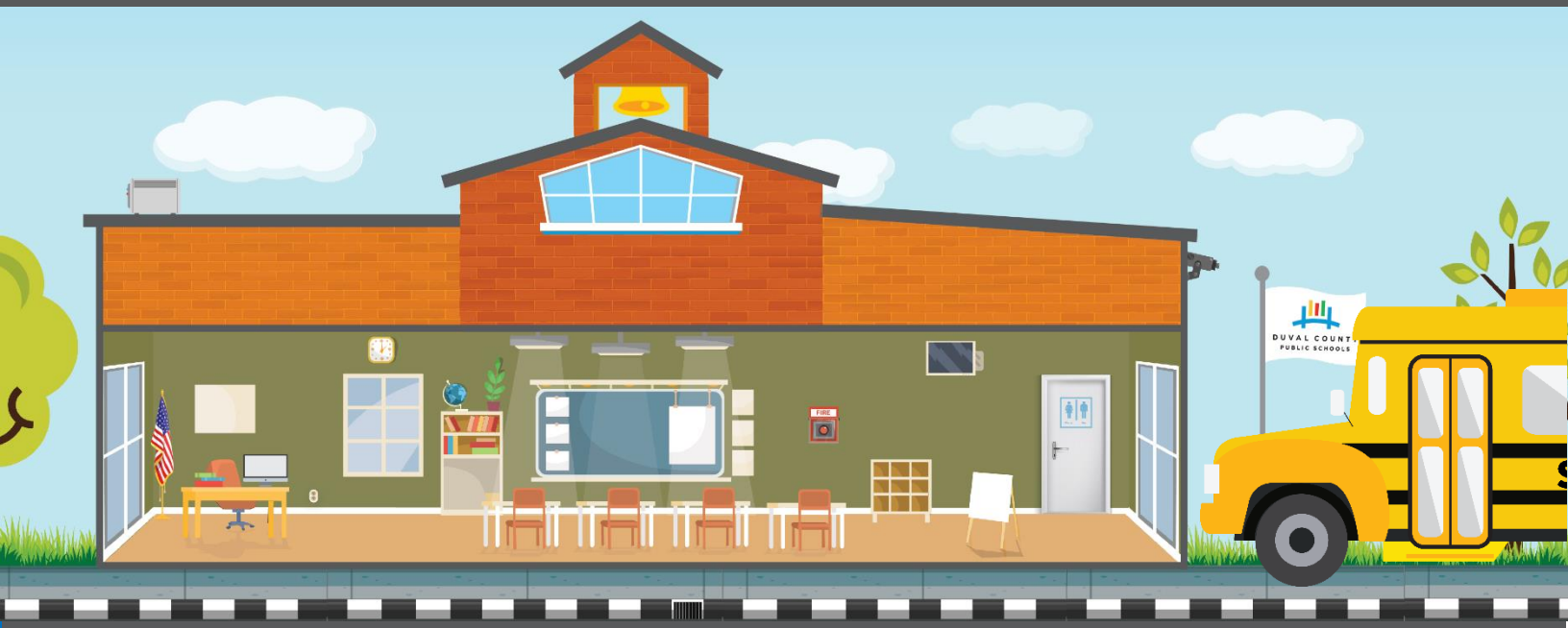


# How a Half-Penny Benefits

## Jefferson Davis Middle School

A Referendum for School Facilities and Economic Growth



### The Direct Impact on Jefferson Davis at J.E.B. Stuart and New Chaffee Middle

Students within the Jefferson Davis district will have new boundaries designating them to the newly renovated J.E.B. Stuart Middle School or newly built middle school in the Chaffee area. The current facility will be converted into a new elementary school.

This school will receive a large amount of referendum dollars so it can handle growth as well as repairs and maintenance. But the first priority will be safety and security. It means system upgrades and improvements such as new security cameras, additional fencing, and more secure entrances and exits.

Repairs that were put off due to lack of funding will be the first to receive help. That means anything from playground equipment to drainage fields on school grounds. The school is eligible for roof repairs and exterior facade improvements. If the air conditioner needs repair or replacement, the funds will be there to take care of it. Some things you can't see, such as plumbing or electrical problems, will be addressed as well.

Finally, this school will receive renovation dollars based on the repair need and size of the building. This goes beyond deferred maintenance and includes items such as entire classroom rebuilds and reconfigurations to meet the needs of today's technology and style of teaching and learning. Since this school has portable classrooms, current over enrollment concerns, and/or future growth potential, additional classrooms will be added to replace portables, provide classrooms to reduce over enrollment concerns and/or accommodate future growth.

### New Middle School @ Chaffee Allocation

**\$36,677,260**



#### New Construction Allocation

**\$36,677,260**

The new construction allocation is calculated based on student capacity. This funding is designed to cover the cost associated with the building of new schools or replacement buildings.

### J.E.B. Stuart Allocation

**\$13,427,514**



#### Safety & Security Allocation

**\$597,420**

The safety and security allocation is calculated based on the square footage of each school site. This funding is designed to cover any site hardening such as security cameras, gates, and alert systems.



#### Facility Condition Improvements

**\$2,920,903**

The deferred maintenance allocation is calculated based on projected maintenance of each school site. This funding is designed to fix all current and projected maintenance issues over five years.



#### Renovations Allocation

**\$5,974,200**

The renovations allocation is calculated based on the square footage of each school site. This funding is designed to cover additional repairs and renovations outside of the deferred maintenance allocation such as flooring, painting, and classroom reconfigurations.



#### New Construction Allocation

**\$3,934,991**

The new construction allocation is calculated based on student capacity. This funding is designed to cover the cost associated with the building of new schools or replacement buildings.



#### Additions

**10 Classrooms**

These additional classrooms/wings are designed to accommodate any projected growth or removal of portables at the school site.

Our Schools. Our Community. Our Future.

visit [ourduvalschools.org](http://ourduvalschools.org) for more information